

Reducers, Additives and Cleaners

4012

High Performance Reducer

- Thinner used for all Auto Air Colors and AutoBorne Sealers.
- Generally added 10% per volume.



4020

Automotive Reducer

- Specialty reducer for cold and humid conditions.
- Generally added 10% per volume.



4030

Balancing Clear I Mix Additive

- Creates an acrylic-urethane mix that performs like solvent-based paint.
- Mix 3:1 (25% per vol.) with pearl and metallic colors, 1:1 (100% per vol.) with **candy₂O**.



4008

Restorer

- Biodegradable, cleansing soak for cleaning gun after water-based painting.
- Partially dissolves cured paint from metallic parts.



Made with quality, lightfast pigments and durable resins intended for automotive applications.

Universally compatible with all types of primers, paints and clears.

No time windows. Colors may be top-coated any time after cured without scuffing.

No pot-life. When stored airtight, colors may be re-used any time after initial use even after reduction.

Material Guide:

- 4oz. covers more than 3 sq. feet; helmets or graphics over base paint.
- 16oz. approx. enough material for a motorcycle tank, fenders and side-covers.
- Small vehicles with jamps: 2 x 32oz.
- Large vehicle and trucks (including tonneau cover) with jamps: 3 x 32oz.

Airbrushing:

4200 Series Colors work best for airbrush colors. Reduce generously with a mix of both 4030 Balancing Clear and 4012 High Performance Reducer. Generally, an equal mix of paint / 4012 Reducer / 4030 Balancing Clear works well. Exact ratios are not required, what is important is atomization. Add enough 4012 High Performance Reducer to achieve optimum atomization with each color.

Made in the USA

170024_032717

AUTO-AIR COLORS™

Water-Based Custom Automotive Paints

Quick Reference Guide

Manufactured by:

CREATEX™ COLORS

1-800-243-2712

info@createxcolors.com

createxcolors.com

Start with AutoBorne Sealers

AutoBorne Sealer are the starting foundation for all Auto Air Colors paint jobs.

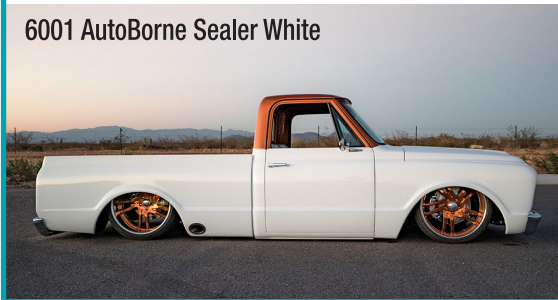
- Reduce 10% per vol. 4012 High Performance Reducer.
- Apply 20-25 inlet psi with 1.2-1.4mm tip-size.
- Tenacious adhesion to any substrate without need for flex additive or adhesion promoter.
- Direct to aluminum, plastic, wood, glass and any type of cured paint and primer.
- Direct to galvanized metal; untreated metal prep with phosphoric acid or 1st apply DTM primer.



**Degrease with solvent-based cleaner
or**

**Apply 4004 Auto Air Transparent Base
as non-reactive barrier prior to applying
solvent-based paint or clear over
AutoBorne Sealer.**

6001 AutoBorne Sealer White

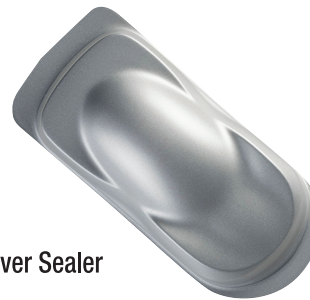


Cover art by Jason Brookshire
of B Street Paintworks, Joplin, Missouri

Auto Air Colors Pearlescent and Metallic Colors

Lightfast, durable base-coat colors for application over AutoBorne Sealers.

- Mix 3:1 (25% per vol.) with 4030 Balancing Clear, reduce mix 10% per vol. 4012 High Performance Reducer.
- Apply 28-30 inlet psi with 1.2-1.3mm tip-size (1.4mm tip is too large and will under-atomize paint).
- Apply over AutoBorne Sealer. Scuffing prior to application not required.
- Pearlescent and Metallic Color references available online and in Createx Colors master catalog.
- Apply Silver and Aluminum colors over 6013 AutoBorne Silver Sealer for even orientation.



6013
AutoBorne Silver Sealer

- Covers semi-opaque. Underlying base color will affect value of finish. Match colors with sealer for improved coverage and minimal stacking.

candy₂O

100% transparent, concentrated, aniline dyes for true candy performance.

- Mix 1:1 (100% per vol.) with 4030 Balancing Clear, reduce mix 10% per vol. 4012 High Performance Reducer.
- Apply 30 psi inlet with a 1.2-1.3mm tip-size.



Candy-Pearl Mixes

- Mix **candy₂O** directly with Auto Air Pearlized and Metallic Colors for candy-pearl base colors.
- For best results, apply over a color-keyed AutoBorne Sealer, for example 4650 mixed with 4316 Pearlized Radiant Red applied over 6006 Sealer Red.
 - Mix **candy₂O** 2:1 pearlescent color for very transparent candy-pearl colors.
 - Mix **candy₂O** 1:1 pearlescent color for higher covering candy-pearl colors.

Tinted Metallic Colors

- Create custom tinted Pearlescent and Metallic Colors by mixing with small amounts of **candy₂O**, generally 5-15% per vol.
- 4652 and 4662 mix excellent with earth-toned Metallic Colors.

4334 Metallic Bronze
tinted 15% per vol.
with 4662 **candy₂O**
Dirt Track Brown

